

Largely Miniature

artworks in various media by members of the **Marion Art Group**

The Marion Art Group was formed in 1978, and in the ensuing years has become a well known and respected group of artists producing high standard works.

The group originated when local artists formed a group to paint and exhibit together. After meeting in the old Warradale Institute for ten years, the group moved to the Marino Community Hall, where members still meet and paint on Mondays. Members work on their own projects using their chosen medium.

Marion Art Group is a non-profit, self supporting organisation with a large membership.

The group exhibits at local venues through the year, and raises funds for charities by raffling a member's donated painting at each exhibition.

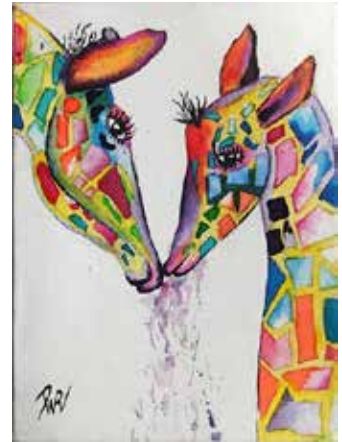


Over the years, many thousands of dollars have been donated to various charities.

While not a teaching group, well known artists are regularly invited to demonstrate or conduct workshops. Optional portraiture and still life groups are held monthly.

After nearly forty years the group is still committed to fostering an active interest in painting for people of all ages – in the Marion community and further afield. Prospective new members are always welcome.

paintings by:
(left) *Glenys Brokenshire*
(right) *Desley Watson-Ralston*



'Largely Miniature'
will be officially launched by
Stephen Skillitzi
Master Fine Arts
6pm, Friday 2 September



Fractured Dawn

paintings by **Janette Humble**

Janette is inspired by the colours of our Australian bush land - their dazzling brilliance and their striking contrasts.

She loves the bright blues, the orange reds, pinks and yellows set against a backdrop of a myriad of greens.

The title 'Fractured Dawn' is partly found in the literal lighting of each piece and partly through the natural cycle of the Australian bush.

Though not every piece is a dawn landscape, Janette is showing the subtle changes between one dawn and another, the stillness, the wildlife, the raw beauty and the fierce bloom of colour, all of which

'Fractured Dawn'
will be officially launched by
Mr Chris Brooks
Principal, High Performance Learning
6.30pm, Friday 2 September

demonstrate the fractured and fragile state of our native Australian bush.

Working in an abstracted or impressionistic style, and using unusual compositions, Janette hopes to evoke in the viewer the knowledge that every dawn, every awakening, every new day is different from the last and is, in a sense, fractured from our perceptions and assumptions of the day just gone.

OUT'n'ABOUT ... in South Australia

artwork by **Dean Ormond** Dip T. (Fine Art) BA Fine Art

This quarter gallery exhibition features a selection of works retrospectively, created over the last forty years.

They have been inspired by several areas of South Australia, and have been created in multi media.

They come from various series including 'Terowie & Booborowie Plain', 'the Fleurieu Peninsula', 'Adelaide & the Port', and 'the Barossa'.

Dean was trained as an artist and Art Teacher in the late 1960's at the South Australian School of Art, and has also been a Painting Lecturer at TAFE.

He describes himself as basically a landscape painter, working mainly in acrylics, although he has also dabbled with printmaking, photography, ceramics and collage.

Dean specializes in South Australian landscapes with old buildings, a subject that he still finds inspiring after 40 years!

Over the years he has won numerous awards, and his work is in private collections around Australia, Hong Kong and Singapore.

An added feature of the exhibition will be the display of old glass bottles, collected from various painting sites.



'OUT'n'ABOUT ... in South Australia'
will be officially launched by
Dr Felicity-ann Lewis
Senior Lecturer, Flinders University
7pm, Friday 2 September

Sunday 28 August
CLOSE OF CURRENT EXHIBITION

2 - 25 September

THREE EXHIBITIONS

- ▶ *'OUT 'n' ABOUT' ... in South Australia*
Paintings by **Dean Ormond**
(QUARTER GALLERY)
- ▶ *'Fractured Dawn'*
Paintings by **Janette Humble**
(QUARTER GALLERY)
- ▶ *'Largely Miniature'*
Artwork in various media
by the **Marion Art Group** (HALF GALLERY)

30 September - 23 October

TWO HALF GALLERY EXHIBITIONS

- ▶ *'Far - Far'*
An international exhibition of contemporary artwork by Germany based artist **Fabian Freese**
- ▶ *'A Light in the Dark'*
Artwork in various media by artists associated with GROW (SA)
Celebrating Mental Health Week 2016.

28 October - 18 November

WHOLE GALLERY EXHIBITION

- ▶ *'Continental Drift'*
Artworks in various media by **Hare Krishna Bag, Loka Nithi Bag, Vijay Kowshik, Eileen Lubiana, Alison Main, Alan Ramachandran & Ian Willding**

28 October - 18 November

WHOLE GALLERY EXHIBITION

- ▶ *'15th Annual City of Marion Community Art Exhibition'*
Artworks in various media by residents of the City of Marion council area



A City of Marion
Cultural Development Project



scan QR code to see current exhibitions at Gallery M
(download a free app for your smart phone)

talking shop



(left)
'Pigmy Possum'
watercolour & gouache
by
Karen Webber
\$135



(above)
'Mummy & Me'
pencil drawing
(unframed with matt) by
Diana Bradshaw
\$90



(above)
'Sleepy Sea lion' scraperboard
by
Mary Woolaway
\$185



(right)
'Fox in the Wind' acrylic
by
Donna Staehr
\$180

STILL AVAILABLE AT GALLERY M

The 2016/2017 Adelaide Entertainment™ Book

just **\$65** gets you over **\$20,000** worth of valuable offers

The 2016 | 2017 Entertainment™ Memberships are available in two formats:

- ▶ **Entertainment™ Book**
– offers are redeemed via Entertainment™ Gold cards and vouchers
- ▶ **Entertainment™ Digital Membership**
– allows you to redeem offers directly from your iPhone or Android smartphone



facebook.com/gallerym287

Please like us on facebook and share our updates, Gallery M information and events